

## PowerEsim Link Installer

### User Manual

#### Introduction:

Thank you for using PowerEsim. This installer will add a shortcut to PowerEsim on your Windows desktop. PowerEsim is the property of the PowerELab Limited. ALL RIGHTS RESERVED.

Under no circumstances, including, without limitation, negligence, shall PowerELab or its parents, subsidiaries, affiliates, officers, directors, employees, agents, or suppliers be liable for any damages, loss or expense including without limitation, direct, indirect, incidental, special, or consequential damages, or economic loss arising from or in connection with this software.

Please visit <http://www.powerEsim.com/> for more information.

#### Supported Browser:

The installer will create dedicated desktop shortcut for the following browsers:

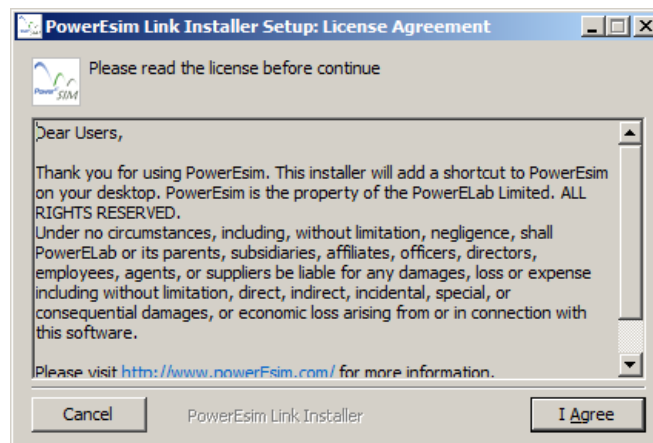
- 1 Internet Explorer
- 2 Firefox
- 3 Google Chrome.

Note: If you are using other Internet browser, please select using "System Default Browser" in the installation option.

#### Installation Steps:

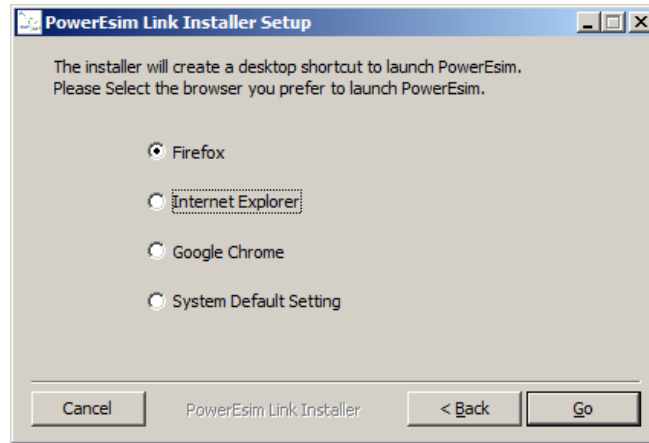
Step 1: Run "PowerEsim Link" executable file

Step2: Read the license and click "I Agree" to continue



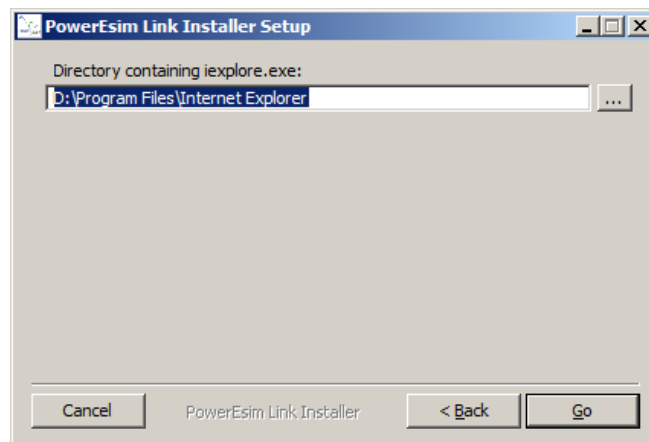
Step3: Select the browser to run PowerEsim

Click "Next" to continue

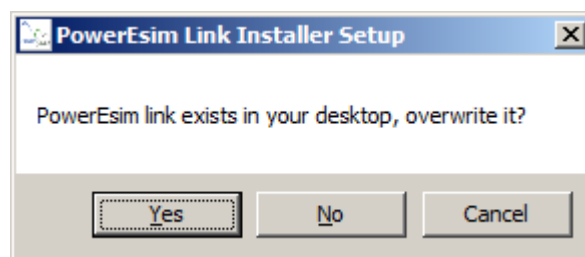


Step 4: Set the directory for the web browser program (this step will be skipped if the user select "System Default Setting" in Step3)

Click "Go" to continue, installation will be terminated if the directory is not correct.



If you have installed the PowerEsim link before, a window would pop up:

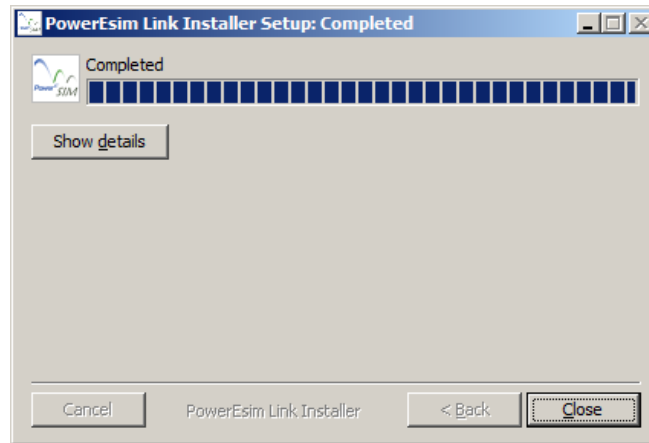


Yes: Overwrite the old link.

No: Install the link with browser name.

Cancel: Abort installation.

Step 5: Start installation



Step 6: Click "Close" to finish the installation.